

N4 is the ultimate go-to choice for versatile asset tracking & monitoring use cases across industries. Proudly 100% designed and developed in India, N4 is engineered for excellence and reliability. Equipped with sensors like Temperature, Humidity, 3-axis IMU & Ambient Light, this BLE beacon packs robust functionality into a compact design.

Enjoy the peace of mind that comes with the long-lasting battery and multiple mounting options. N4's seamless integration and hassle-free deployment ensure efficient real-time data collection and optimal asset management elevating your tracking & monitoring capabilities.



use cases



Retail Promotions

Engage customers with timely offers as they browse.



Safety and Security

Utilize motion detection and SOS features for enhanced safety measures.



Hospitality

Enhance guest experiences with personalized services.



Event Management

Provide attendees with location based information and updates.



Environmental Monitoring

Track temperature, humidity, and other environmental factors in real time.

Enhanced Connectivity and Versatility

Comprehensive Engagement Solutions

Supports Apple iBeacon, Google Eddystone (UID, URL, TLM), and custom formats.

Multi-Advertising Capabilities

Can support 6 different types of advertisement formats, including SOS, UID, URL, TLM, iBeacon, and custom formats.

Customizable Configurations

Available on Android, allowing customization of beacon name, Tx power, advertising format, and interval.

Services & Customization

Customizable Options

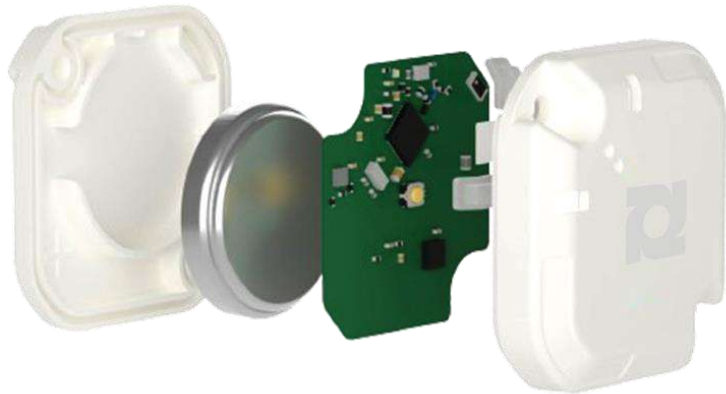
Branding, logo, label, packaging, enclosures and firmware can be tailored to your needs.

Efficient Time to Market

Our all-round service and customization options save you time and costs, enabling rapid deployment.

Certifications

Complies with RoHS, FCC, REACH, CE.



General Features

Main Chip	Nordic nRF52820
Bluetooth	Bluetooth 4.2 Compliant. Bluetooth 5.2 Certified
Range	Upto 100m (In open area & No obstacles)
Dimension	36mm x 36mm x 11.50mm
Weight	13.5g (With Battery)
Material	ABS Plastic
Waterproof	IP65
Color	White (Customizable)
Installation	Hang, Neck Chain, Sticker
Button	Switch is on PCB. Can be accessed through the housing.
LED	1 Red LED, 1 Green LED
Sensor	Temperature & Humidity, Ambient Light Sensor, 3 axis accelerometer
Operating Temperature	-30°C / + 70°C
Storage Temperature	-20°C / + 70°C (without battery) 10°C / + 25°C (with battery)
Humidity	0% ~ 95% (non-condensing)

Power

Power Supply	Non-Replaceable, Non-Rechargeable CR2450 Li-ion coin cell battery
Average Current	19uA (Default settings)*
Lifetime	3+ years (Default settings)*

Functions	
Advertising Format	Apple iBeacon Google Eddystone (UID, URL, TLM) User Custom
Multi advertising	It can support 6 different types of advertisement formats (SOS, UID, URL, TLM, iBeacon, Custom)
Configuration App	Available on Android
Configurable List	Device Name Advertising Interval Tx Power Advertising Format (Apple iBeacon) (Google Eddystone) (Napino Beacon Pro Sensor Data)
Battery Status	Battery voltage (%) broadcast in the ADV packet
Sensor Sampling	Broadcast Sensor Data every 10s (Customizable)
Status LEDs	Red and Green LEDs are present for various status indications
Indoor location tracking	RSSI value broadcast in ADV packet for indoor location tracking through gateway
Push Button	Press the Switch available on Board to trigger the SOS and broadcast the SOS packet
Motion Detection	3 axis accelerometer can sense whether the Beacon is in motion or not to trigger certain conditions
Fall Detection	3 axis accelerometer can sense the fall detection
Firmware Update	Nordic DFU OTA

Default Settings

1 active slot, 5s ADV interval, 0dBm Tx power, 10s Sensor data broadcast interval




36mm x 36mm x 11.50mm





as light as “cherry”

Rapidise Technology Private Limited

 415, Palladium Business Hub, Motera, Ahmedabad-380005, India

 Info@rapidise.co

 +91 7486023838

 rapidise.co